

# FAIRWAY POINT

life happens here.

**The Baywood  
Collection**

**PADILLA**

**Square Footage**

2,388 SQ. FT.  
1,001 MAIN - 1,387 UPPER  
547 GARAGE,  
101 FRONT PORCH,  
100 BACK PORCH

**Bedrooms**

MASTER SUITE, 3 BEDROOMS,  
DEN, AND BONUS ROOM

**Bathrooms**

2 FULL BATHROOMS AND  
1 POWDER ROOM

**Other Rooms**

FAMILY/LIVING ROOM,  
DINING ROOM, AND  
LAUNDRY ROOM

**Other Features**

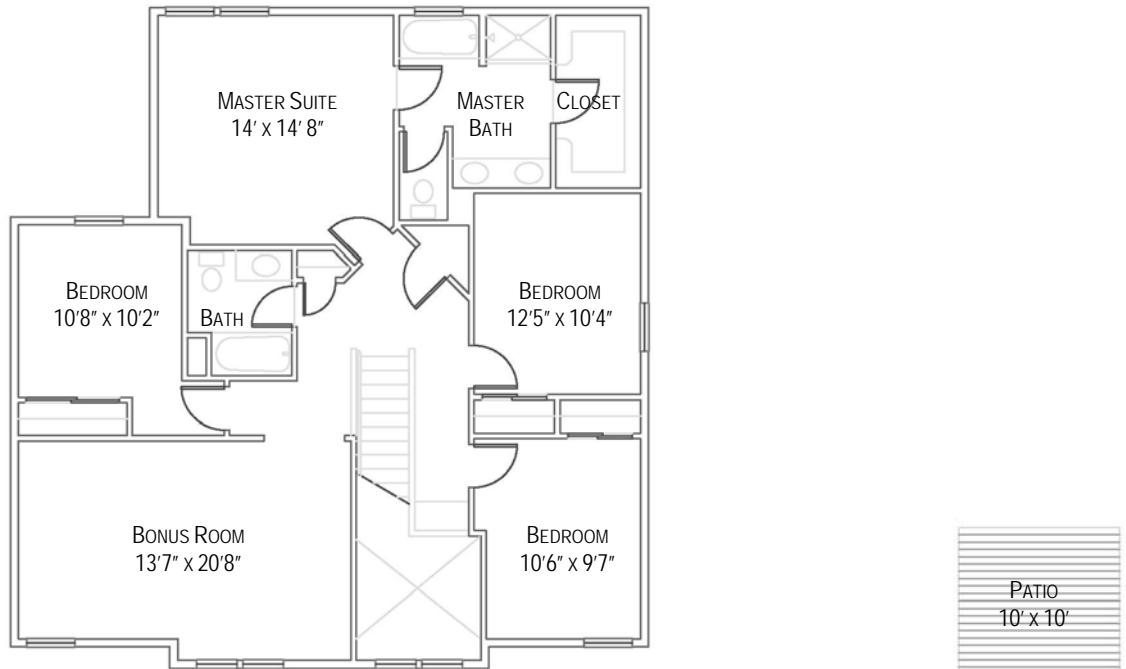
LARGE MASTER SUITE  
OPEN KITCHEN WITH  
BREAKFAST BAR  
COVERED FRONT PORCH  
DEEP SINK IN LAUNDRY ROOM  
FAMILY ROOM WITH  
ELECTRIC FIREPLACE

**Architecture**

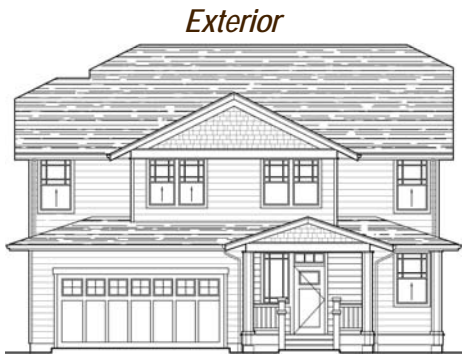
TWO-STORY  
NW CRAFTSMAN STYLE

**Garage**

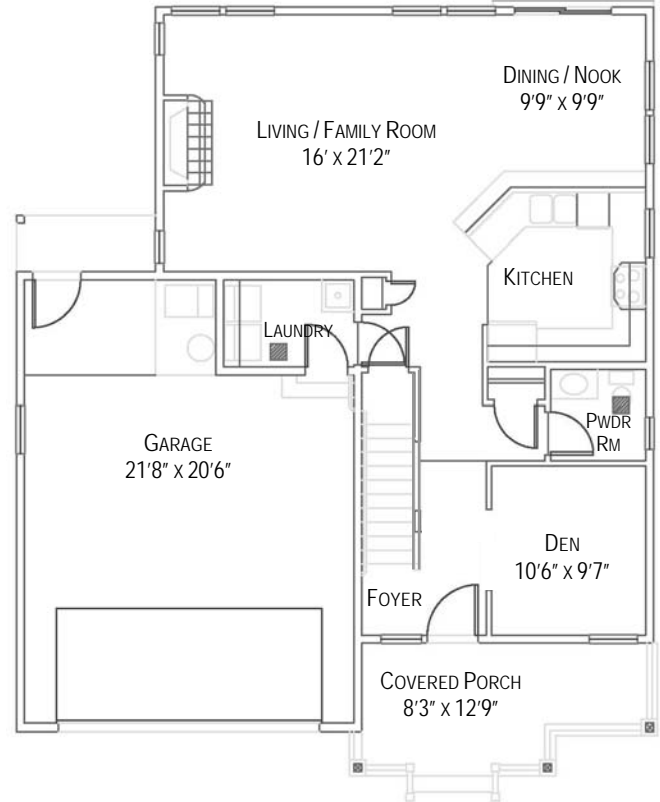
2 CAR  
WITH NICHE  
INSULATED WITH  
FINISHED DRYWALL



**Upper Floor**



**Exterior**



**Main Floor**

FLOORPLAN AND ELEVATION SHOWN ARE FOR ILLUSTRATION PURPOSES ONLY. COLORS AND SIZES ARE APPROXIMATE.

BUILDER RESERVES THE RIGHT TO REVISE FLOORPLANS AND ELEVATIONS AS NECESSARY TO ACCOMMODATE SITE CONDITIONS AND AVAILABILITY OF MATERIALS.