

FAIRWAY POINT

life happens here.

*The Baywood
Collection*

MAXWELTON

Square Footage

1,887 Sq. Ft.

501 GARAGE,
151 FRONT PORCH,
205 COVERED BACK PATIO

Bedrooms

MASTER SUITE, 2 BEDROOMS

Bathrooms

2 BATHROOMS

Other Rooms

LIVING ROOM, DINING ROOM
LAUNDRY ROOM

Other Features

LIVING ROOM WITH
VAULTED CEILING AND
ELECTRIC FIREPLACE

BREAKFAST BAR IN KITCHEN

COVERED DECK

SOAKING TUB IN
MASTER SUITE

DEEP SINK IN LAUNDRY ROOM

Architecture

SINGLE STORY

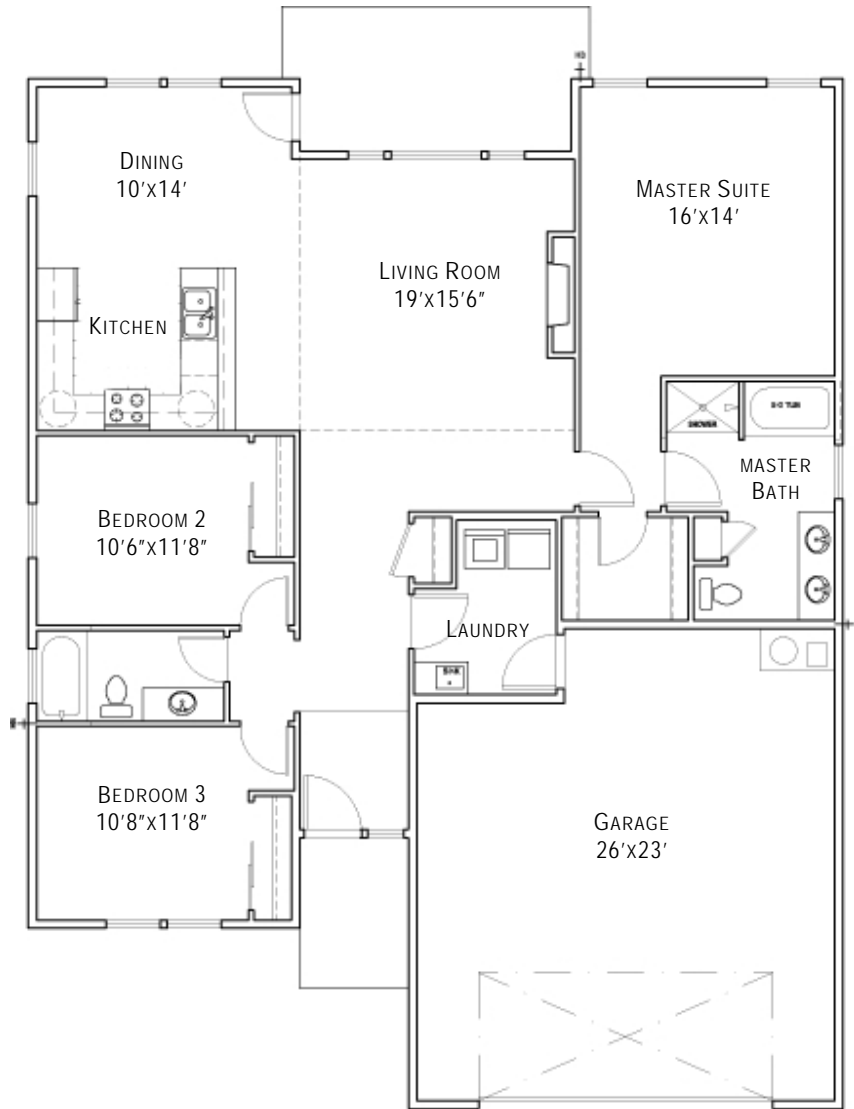
NW CRAFTSMAN STYLE

2 ELEVATION OPTIONS

Garage

2 CAR

INSULATED WITH
FINISHED DRYWALL



Elevation Options



ELEVATION A



ELEVATION B

FLOORPLAN AND ELEVATION SHOWN ARE FOR ILLUSTRATION PURPOSES ONLY. COLORS AND SIZES ARE APPROXIMATE.

BUILDER RESERVES THE RIGHT TO REVISE FLOORPLANS AND ELEVATIONS AS NECESSARY TO ACCOMMODATE SITE CONDITIONS AND AVAILABILITY OF MATERIALS.