

# FAIRWAY POINT

life happens here.

The Castle Pines Collection

## SALISH

### SQUARE FOOTAGE

2,765 Sq Ft

### BEDROOMS

MASTER SUITE  
3 BEDROOMS

### BATHROOMS

3 FULL BATHROOMS

### OTHER ROOMS

LIVING ROOM  
DINING ROOM  
STUDY  
MEDIA/FLEX ROOM  
LAUNDRY ROOM

### OTHER FEATURES

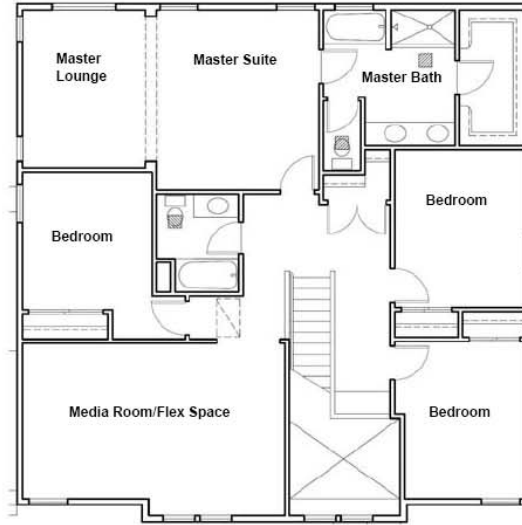
LIVING ROOM WITH VAULTED CEILING AND FIREPLACE  
OPEN KITCHEN WITH BREAKFAST BAR  
COVERED FRONT PORCH  
MASTER SUITE W/ LOUNGE, SOAKING TUB AND WALK-IN CLOSET

### ARCHITECTURE

2 STORY  
NW CRAFTSMAN STYLE

### GARAGE

3 CAR  
INSULATED WITH FINISHED DRYWALL



Upper Level



Main Level



Floorplan and elevation shown are for illustration purposes only. Colors and sizes are approximate.

Builder reserves the right to revise floorplans and elevations as necessary to accommodate site conditions and availability of materials.

**LANDED GENTRY**  
HOMES AND COMMUNITIES  
Local 360.679.2378 • [www.LandedGentry.com](http://www.LandedGentry.com) • Toll Free 1.866.204.6710