

# FAIRWAY POINT

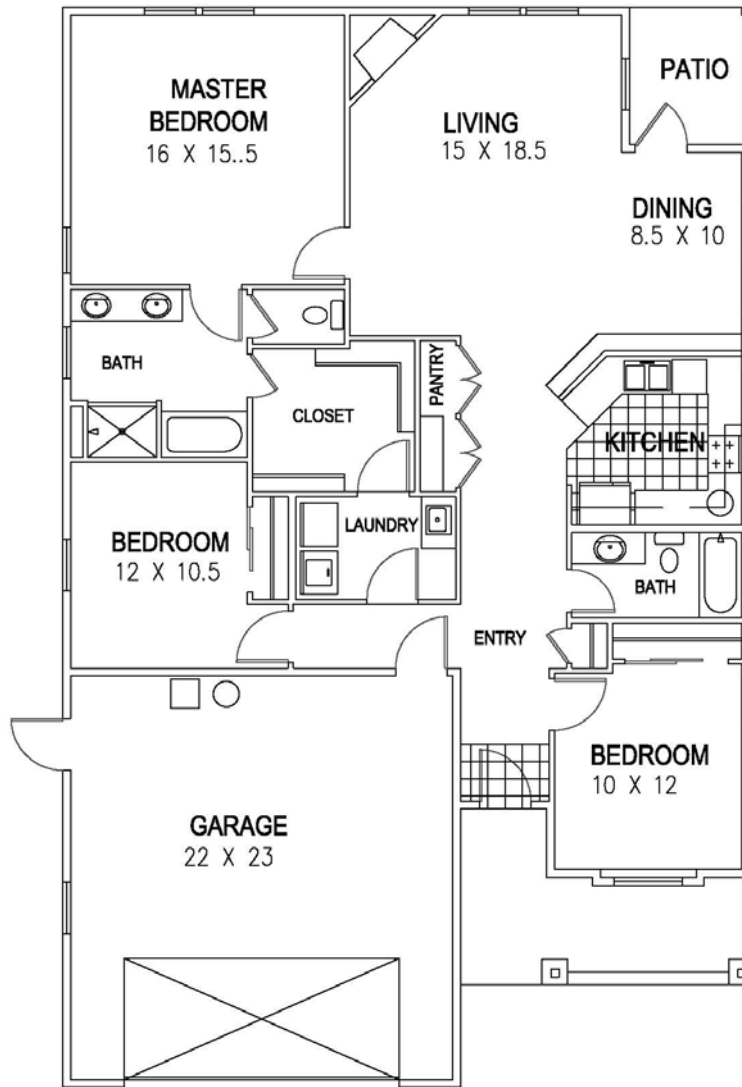
*Oakmont Collection*

## HARBOR

**SQUARE FOOTAGE:** 1,685 Sq. Ft.  
**BEDROOMS:** MASTER SUITE, 2 BEDROOMS  
**BATHROOMS:** 2 BATHROOMS  
**OTHER ROOMS:** LIVING ROOM, DINING ROOM, LAUNDRY ROOM  
**OTHER FEATURES:** FAMILY ROOM WITH VAULTED CEILING AND FIREPLACE, OPEN KITCHEN, SOAKING TUB IN MASTER BATH, COVERED PATIO  
**TYPE:** 1 STORY, NW CRAFTSMAN STYLE ARCHITECTURE  
**GARAGE:** 2 CAR, INSULATED WITH FINISHED DRYWALL



NW Craftsman Style Elevation



Floorplan and elevation shown are for illustration purposes only. Colors and sizes are approximate. Builder reserves the right to revise floorplans and elevations as necessary to accommodate site conditions and availability of materials.