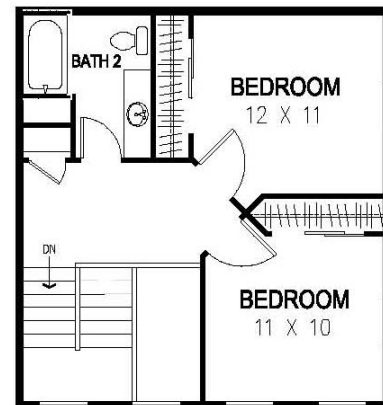
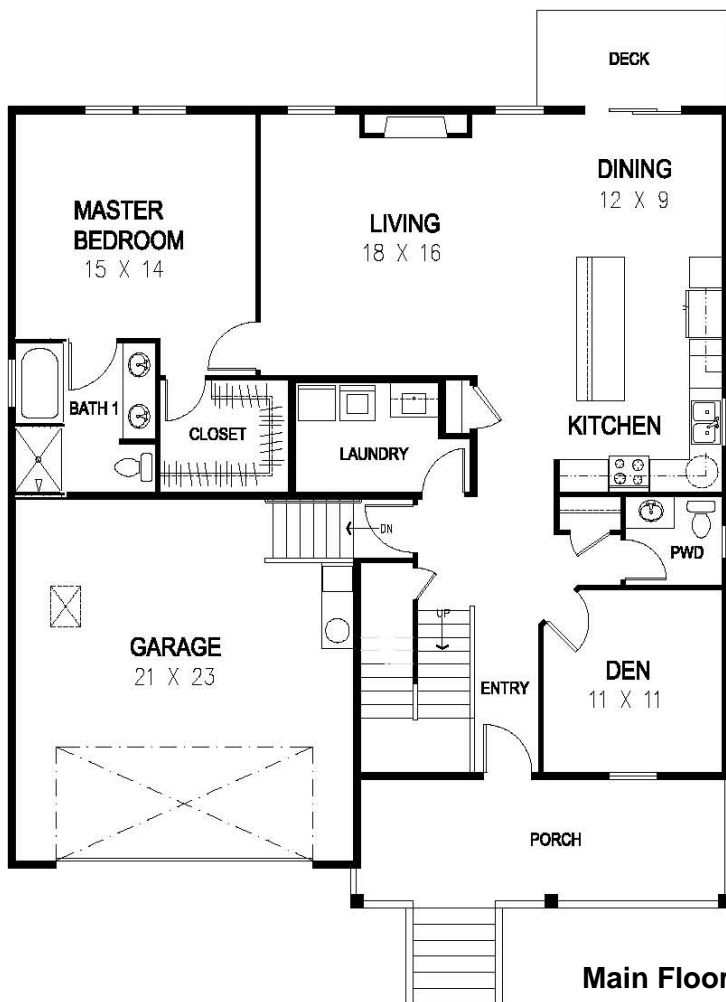


# Aspen Lane

Burlington, WA

## ASPEN-FG2

**SQUARE FOOTAGE:** 1,989 Sq. Ft.  
**BEDROOMS:** MASTER SUITE, 2 BEDROOMS,  
1 DEN / 3<sup>RD</sup> BEDROOM  
**BATHROOMS:** 2 BATHROOMS, 1 POWDER ROOM  
**FEATURES:** GREAT ROOM WITH VAULTED CEILING AND  
FIREPLACE, OPEN KITCHEN WITH BREAKFAST BAR, MAIN  
FLOOR MASTER WITH SOAKING TUB IN BATH, COVERED  
PORCH, LAUNDRY ROOM  
**TYPE:** 2 STORY, NW CRAFTSMAN STYLE ARCHITECTURE  
**GARAGE:** 2 CAR, INSULATED WITH FINISHED DRYWALL



Upper Floor

Main Floor

Floorplan and elevation shown are for illustration purposes only. Colors and sizes are approximate. Builder reserves the right to revise floorplans and elevations as necessary to accommodate site conditions and availability of materials.

**LANDED GENTRY**  
HOMES AND COMMUNITIES

**GREGG MURPHY**  
360.661.1490

**CANDACE BUTLER**  
360-661-2129

VIEW FLOOR PLANS @ [www.LandedGentry.com](http://www.LandedGentry.com)