

# MONTREAUX

# HAWTHORNE

## Square Footage

1,530 Sq. Ft.

## Bedrooms

MASTER SUITE  
PLUS 2 BEDROOMS

## Bathrooms

2 BATHROOMS

## Other Rooms

FAMILY RM, DINING RM  
LAUNDRY RM,

## Other Features

LIVING RM WITH VAULTED  
CEILING AND FIREPLACE

OPEN KITCHEN WITH  
BREAKFAST BAR

WALK-IN CLOSET  
IN MASTER SUITE

COVERED PATIO / DECK

DEEP SINK IN  
LAUNDRY ROOM

## Architecture

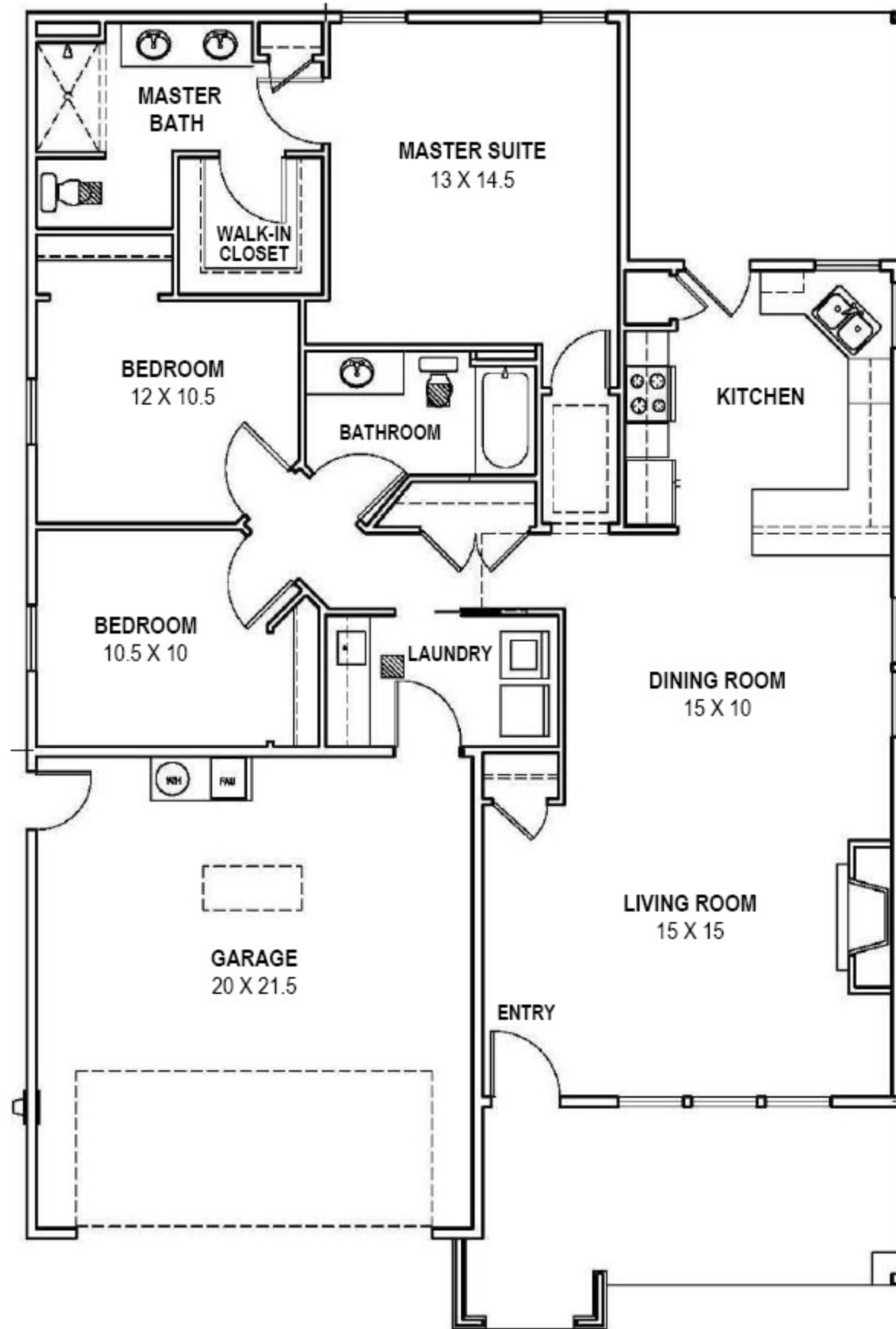
SINGLE STORY

FRENCH COTTAGE  
STYLE EXTERIOR

## Garage

2 CAR

INSULATED WITH  
FINISHED DRYWALL



ASK ABOUT OUR  
3-CAR GARAGE OPTION  
Limited Availability

Floorplan and elevation shown are for illustration purposes only. Colors and sizes are approximate. Builder reserves the right to revise floorplans and elevations as deemed necessary.

