

MONTREAUX

HAWTHORNE

Square Footage

1,530 Sq. Ft.

Bedrooms

MASTER SUITE
PLUS 2 BEDROOMS

Bathrooms

2 BATHROOMS

Other Rooms

FAMILY RM, DINING RM
LAUNDRY RM,

Other Features

LIVING RM WITH VAULTED
CEILING AND FIREPLACE

OPEN KITCHEN WITH
BREAKFAST BAR

WALK-IN CLOSET
IN MASTER SUITE

COVERED PATIO/DECK

DEEP SINK IN
LAUNDRY ROOM

Architecture

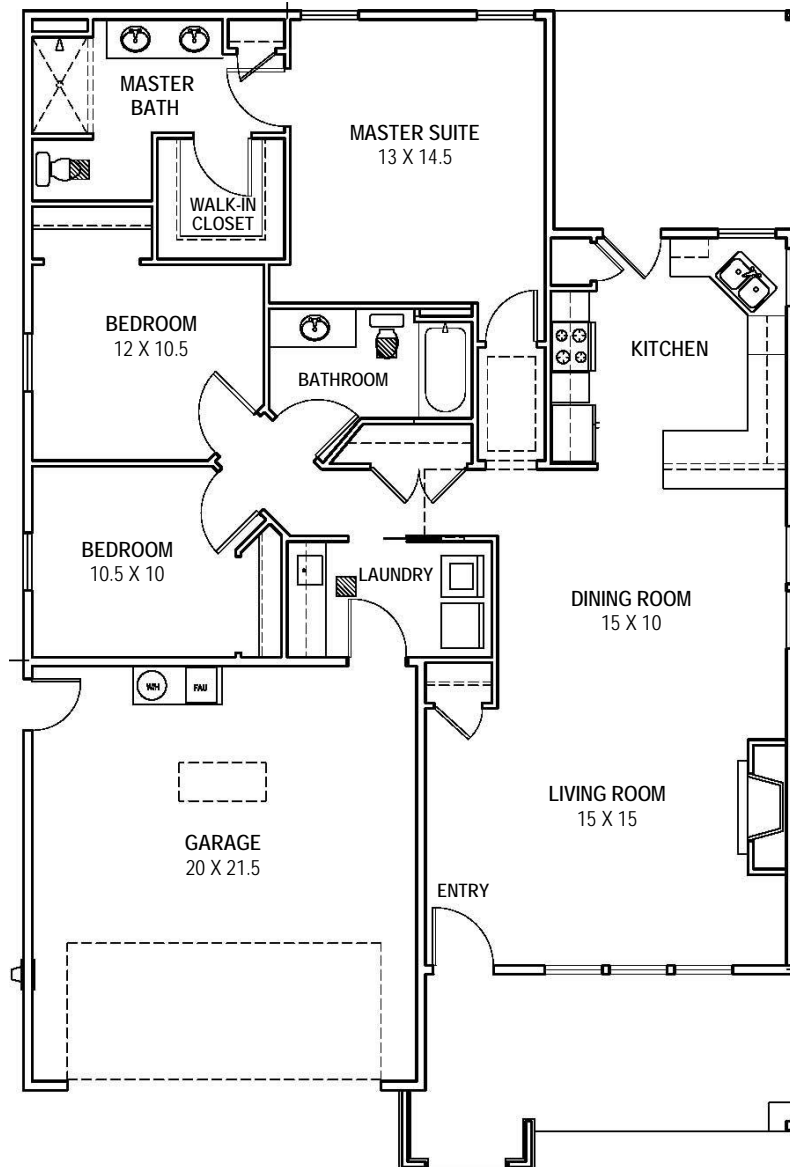
SINGLE STORY

FRENCH COTTAGE
STYLE EXTERIOR

Garage

2 CAR

INSULATED WITH
FINISHED DRYWALL



**ASK ABOUT OUR
3-CAR GARAGE OPTION**
Limited Availability

Floorplan and elevation shown are for illustration purposes only. Colors and sizes are approximate. Builder reserves the right to revise floorplans and elevations as deemed necessary.

