

RH5a

Square Footage: 2034

Bedrooms: Master Suite, Bedrooms, Den

Bathrooms: 2 Bathrooms, Powder room

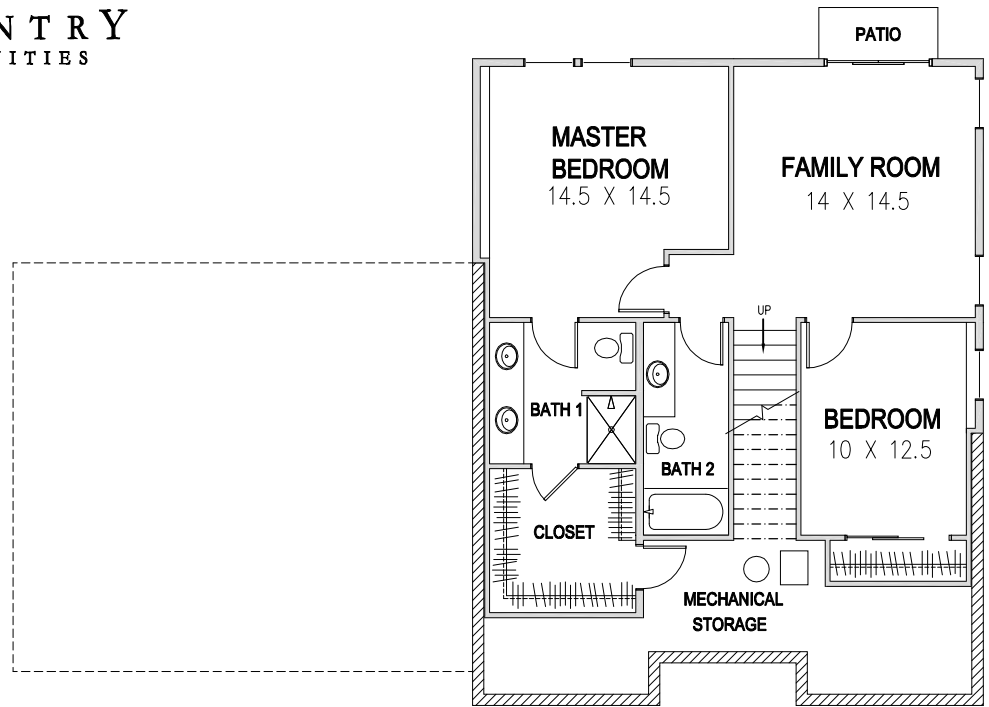
Other Rooms: Laundry Room; Family Room; Dining Room; Living Room

Features: Living Room with Gas Fireplace; Eating Bar in Kitchen;

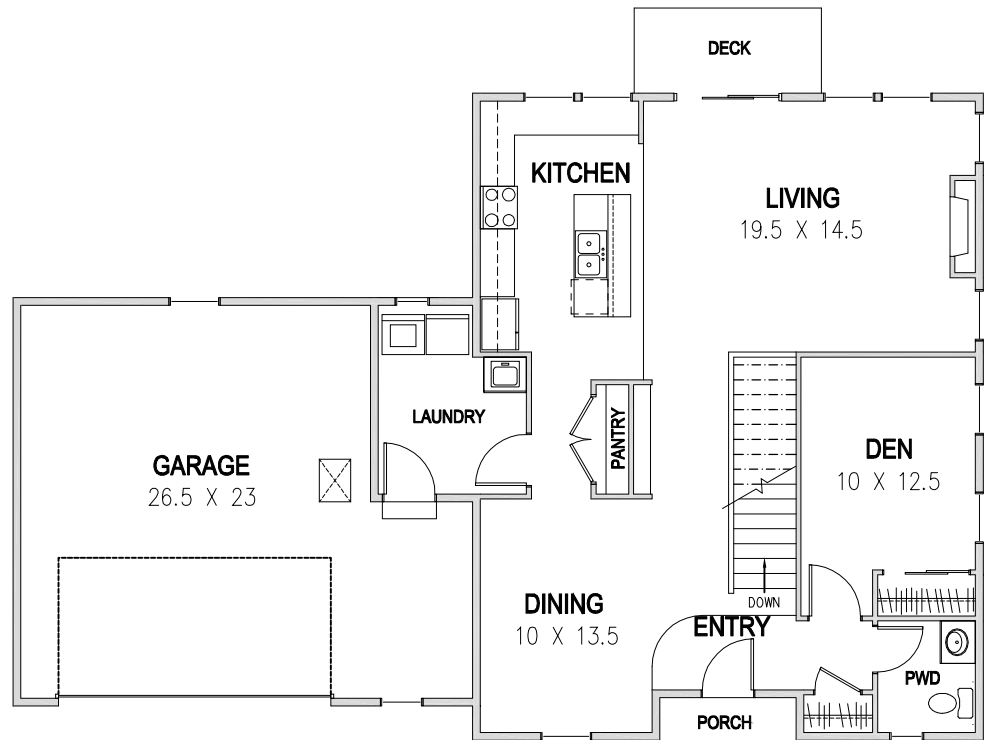
Type: One Story with Daylight Basement, NW Craftsman Style Architecture

Garage: 2 Car, Insulated with Finished Drywall

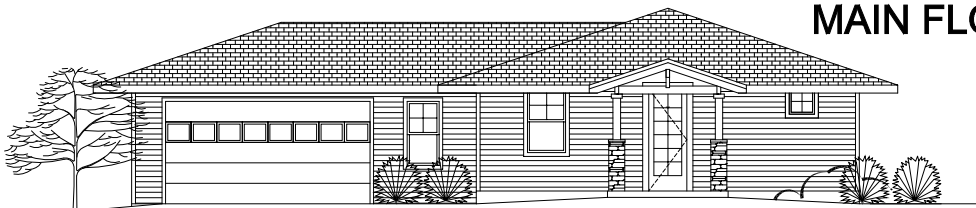
[Floor plan and elevation shown are for illustration purposes only and sizes are approximate. The builder has the right to change the plan as necessary to accommodate site conditions and material availabilities.]



DAYLIGHT BASEMENT PLAN



MAIN FLOOR PLAN



STREET VIEW